

RPB® Z-LINK® RESPIRATOR

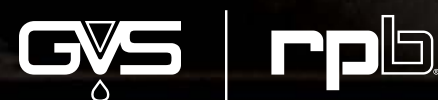
Complete versatility.

The RPB Z-Link offers numerous configurations so you can wear it your way. From grinding and welding (with the Z-Link+), to smelting in high heat environments (with the Z-Link Radiant Heat), the Z-Link builds the foundation for the most versatile respirator on the planet. Designed with your comfort in mind, the Z-Link ensures you'll always be protected for life's best moments.

The Z-Link's large visor acts as the framework for multiple accessories to easily transform your protection to suit your environment. With the visor's widened perspective, this provides you with an exceptional downward and peripheral field of view and with the hinge visor opening, this gives you the ability to easily communicate outside of the work environment. With 5 lens options (including a shade 5 lens), the Z-Link also lends itself to arc spraying.

To further increase your comfort and stability, the Z-Link can also be fitted with the Comfort-Link™ padding system for an even greater level of comfort. Experience complete protection and versatility with the RPB Z-Link.

The Z-Link offers superior protection in all key areas:



Protecting you for life's best moments.

Features & Benefits Z-Link®

Optimal vision and high velocity impact protection with large optically-clear safety lens (replaceable spare part). Choice of 5 anti-fog and scratch resistant ANSI Z87+ (EN166) lenses: Premium Clear, Green Tint (Shade 5), Yellow Tint, Black Tint, and Mirror Tint. **Tear-off lens system ensures you have a clear field of view at all times.**

Air flow and distribution is fully adjustable with the air deflector system to suit your personal preference.

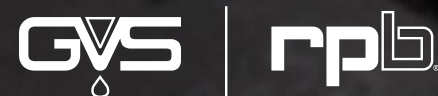
Air supply circulates throughout the headtop, moving over your skin to cool you down, enhancing your experience of comfort.

Fixed jaw ensures secure cape attachment.

All parts can be purchased individually for ease of maintenance and servicing.

Vision-Link™ light mount point.

Visor shown open for marketing purposes only. Do not open your visor in the work environment. US Patent No. US D802,117 S.



Protecting you for life's best moments.



ANSI Z89.1 certified head protection (EN397).

Visor hinges open for easy communication with the team (outside of respiratory hazards).

Padded interior with adjustable ratchet system ensures a perfect customized fit that supports movement, increasing comfort and productivity. **The optional Comfort-Link™ padding system provides further comfort and stability.**



Shown without cape for marketing purposes only. >>

Compatible with RPB Comms-Link™ in-helmet communication system.

Zytec® FR face seal or shoulder cape available. **FR breathing tube cover available to increase the life of the breathing tube.**

Certifications

ISO9001
CERTIFIED COMPANY



PAPR & SAR Type C



S3.19
HEARING PROTECTION
Only in conjunction with 18-533 earmuffs.

Z89.1
HARD HAT PROTECTION
Type 1 Class G

Z87+
EYE & FACE PROTECTION

PRODUCT CERTIFICATION



BSI Certified Product
AS/NZS 1716:2012
BMP# 714303
RESPIRATORY PROTECTION

AS/NZS 1801:1997
BMP# 714306
HARD HAT PROTECTION

AS/NZS 1337.1:2010
BMP# 714304
EYE & FACE PROTECTION

CE 2797
UK 0086

EN14594:2005 3B
EN12941:1998
+A2:2008 TH3/2/1 P R SL
RESPIRATORY PROTECTION
See instruction manual for protection levels.

EN352-3:2002
HEARING PROTECTION
Only in conjunction with 18-533 earmuffs.

EN397:2012+A1:2012
HARD HAT PROTECTION
Conforms to impact and optional clauses.

EN166:2001 CLASS 1 BT 9 3
EYE & FACE PROTECTION



Certified Model
Modèle certifié

CSA Z94.3-15
EYE & FACE PROTECTION
Class 7D Respirator Facepiece
PROTECTION DES YEUX
ET DU VISAGE
Masque respiratoire classe 7D



For more information visit
rpbsafety.com/z-link

Features & Benefits Z-Link+

The Z-Link+ utilizes the Z-Link headtop as the framework for this product, offering all the same features and benefits of the Z-Link while extending the product's capabilities to protect you while welding.

The Z-Link+ weld visor weighs just 13.8 ounces (390g) including ADF lens. **This can be easily removed for extended periods where just grinding is required.**



■ Large welding auto darkening filter with a 1/1/1/2 rating. Variable auto darkening lens (shades 3, 5, or 9-13). Replaceable impact and ADF lenses for ease of maintenance. **Optional magnifying lens available.**



■ Z-Link+ visor attaches directly onto to the main grinding visor, enabling you to seamlessly switch from welding to grinding while maintaining respiratory protection.

Certifications

All Z-Link® certifications apply. The Z-Link+ offers additional certifications, indicated in green below:

ISO9001
CERTIFIED COMPANY

NIOSH
National Institute for
Occupational Safety and Health
PAPR & SAR Type C

ANSI
S3.19
HEARING PROTECTION
Only in conjunction with 18-533 earmuffs.

Z89.1
HARD HAT PROTECTION
Type 1 Class G

Z87+
EYE & FACE PROTECTION

Z87W
WELDING EYE PROTECTION

PRODUCT CERTIFICATION
BSI Certified Product
AS/NZS 1716:2012
BMP# 714303
RESPIRATORY PROTECTION

AS/NZS 1801:1997
BMP# 714306
HARD HAT PROTECTION

AS/NZS 1337.1:2010
BMP# 714304
EYE & FACE PROTECTION

AS/NZS 1338.1:2012
BMP# 714305
WELDING EYE PROTECTION

CE 2797
UK 0086

EN14594:2005 3B
EN12941:1998
+A2:2008 TH3/2/1 P R SL
RESPIRATORY PROTECTION
See instruction manual for protection levels.

EN352-3:2002
HEARING PROTECTION
Only in conjunction with 18-533 earmuffs.

EN397:2012+A1:2012
HARD HAT PROTECTION

EN166:2001 CLASS 1 BT 9 3
EYE & FACE PROTECTION

EN379:2003
WELDING EYE PROTECTION

CEI

Certified Model
Modèle certifié

CSA Z94.3-15
EYE & FACE PROTECTION
Class 7D Respirator Facepiece
PROTECTION DES YEUX
ET DU VISAGE
Masque respiratoire classe 7D

MADE IN THE USA
*From local & globally sourced components

Features & Benefits Z-Link® Radiant Heat

Utilizing the Z-Link framework, the RPB Radiant Heat kit attaches to the Z-Link headtop, enabling you to work in high heat environments while experiencing unrivaled comfort and protection.

Gold coated visor reflects radiant heat, minimizing heat transfer for increased comfort while ensuring eye protection.

Visor options include anti-scratch gold coated (pictured), anti-scratch IR5 gold coated, and IR5.



Large visor lift tab enables you to easily raise and lower visor while wearing gloves.

Airflow is dispersed throughout your breathe zone, as well as over your head, neck and upper body to aid in cooling.



Protecting you for life's best moments.



Integrated hard hat protection.



The aluminized fabric is flame resistant and protects the skin from sparks, splashes and radiant heat. Manufactured from Newtex Z-Flex O-310 Aluminized FR O-PAN/Aramid fabric.

Clip-on visor requires no tools for easy detachment and replacement.

Secured cape ensures the hood moves with you for a greater range of movement.

Aluminized breathing tube cover is available to increase the life of the breathing tube.

Certifications

All Z-Link® certifications apply.

ISO9001
CERTIFIED COMPANY

NIOSH
National Institute for
Occupational Safety and Health
PAPR & SAR Type C

ANSI
S3.19
HEARING PROTECTION
Only in conjunction with 18-533 earmuffs.

Z89.1
HARD HAT PROTECTION
Type 1 Class G

Z87+
EYE & FACE PROTECTION

PRODUCT CERTIFICATION
BSI Certified Product
AS/NZS 1716:2012
BMP# 714303
RESPIRATORY PROTECTION

AS/NZS 1801:1997
BMP# 714306
HARD HAT PROTECTION

AS/NZS 1337.1:2010
BMP# 714304
EYE & FACE PROTECTION

CE 2797
UK 0086

EN14594:2005 3B
EN12941:1998
+A2:2008 TH3/2/1 P R SL
RESPIRATORY PROTECTION
See instruction manual for protection levels.

EN352-3:2002
HEARING PROTECTION
Only in conjunction with 18-533 earmuffs.

EN397:2012+A1:2012
HARD HAT PROTECTION

EN166:2001 CLASS 1B T 9 3
EYE & FACE PROTECTION

SEI
Certified Model
Modèle certifié

CSA Z94.3-15
EYE & FACE PROTECTION
Class 7D Respirator Facepiece
PROTECTION DES YEUX
ET DU VISAGE
Masque respiratoire classe 7D



For more information visit
rpbsafety.com/z-link-radiant-heat

Build Your RPB® Z-Link® Respirator

Note: Not all configurations may be available in your region.

1 Choose Your Headtop



→ Z-Link®



→ Z-Link+®



→ Z-Link® Radiant Heat
Jump to 3 Choose Your Air Supply

2 Choose Your Cape



→ Zytec® FR Face Seal



→ Zytec® FR Shoulder Cape



→ Zytec® FR Chin Seal

3 Choose Your Air Supply



→ PX5® (PAPR)
HEPA, OV/AG/HE, Multi-Gas/HE, A2P,
ABE1P & ABEK1P cartridges/filters available.



→ HX5™ (PAPR)
HEPA filters available.



→ C40™ Climate Control Device (SAR)

4 Choose Your Upgrades



→ Comms-Link™ In-helmet
communication system



→ Comfort-Link™
Side padding system



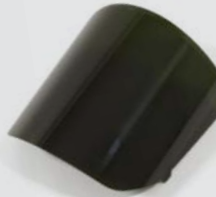
→ Vision-Link™ 650 lumen
helmet lighting system



→ Quiet-Link™ Ear defenders
US Patent No. US D788,991 S.



→ Safety Lens
Anti-fog / Anti-Scratch
Available as yellow tinted,
mirror tinted, or smoke tinted.



→ Safety Lens
Infrared (Shade 5)



→ Radiant Heat Gold Coated
Visor - Anti-Scratch
Available as standard gold
coated and IR5 gold coated.



→ Radiant Heat IR5 Visor
(Radiant Heat only.)



→ Tear-off Lens
Available in packs of 50.



→ Ultra Magnifying Lens
Available in 1.0, 1.5, 2.0 and 2.5.



→ FR Hose Cover
Breathing tube not included.



→ Aluminized Hose Cover
Breathing tube not included.

BUILD & PRICE
YOUR RESPIRATOR

Visit [rpbsafety.com](https://rpbsafety.com/z-link/build)
/z-link/build
or give us a call
1-866-494-4599



Protecting you for life's best moments.

WANT TO KNOW MORE? CONTACT US

rpb-safety.com/industrial

Request a quote rpb-safety.com/industrial/request-a-quote

Start your 30 day trial rpb-safety.com/industrial/buy-to-try

Or call us toll-free at 1-866-494-4599



youtube.com/rpb-safety



linkedin.com/company/rpb-safety

WARNING PRODUCT SELECTION

- 1. Determine what type of protection is required for your activity.** As applicable, check your workplace safety program, respiratory protection program, and standards and regulations for your activity or industry.
 - 2. Check product specifications.** Contact RPB® or check the product instruction manual (downloadable from rpb-safety.com) for complete specifications, including approvals, standards, and regulations to which the product conforms.
 - 3. Make sure you have a complete system.** Verify that you have or are purchasing all required components. System requirements are available from RPB® or in product instruction manuals.
- Selecting inappropriate or incomplete equipment, including the use of counterfeit or non-RPB® parts, can result in inadequate protection and will void the NIOSH approval of the entire respirator.**

Copyright ©2022 RPB IP, LLC. All rights reserved.

All materials contained in this publication are protected by United States copyright law and may not be reproduced, distributed, transmitted, displayed, published or broadcast without the prior written permission of RPB IP, LLC. You may not alter or remove any trademark, copyright or other notice from copies of the content.

Trademarks and Other Intellectual Property

All trademarks, service marks, and logos used in this publication, both registered and unregistered, are the trademarks, service marks, or logos of their respective owners. The green and gray color combination is a registered trademark of RPB IP, LLC. All rights in the RPB Intellectual Property contained in this publication, including copyright, trademarks, service marks, trade secret, and patent rights are reserved. RPB Intellectual Property means any patent, patented articles, patent applications, designs, industrial designs, copyrights, software, source code, database rights, moral rights, inventions, techniques, technical data, trade secrets, know-how, brands, trademarks, trade names, slogans, logos, and any other common law and proprietary rights, whether registered or unregistered anywhere in the world, that are owned by, developed in whole or in part by, or licensed by RPB IP, LLC.



Protecting you for life's best moments.

